

Scanned area: 25 x 1 mm

4 different settings of brightness/contrast:

zar\_n1 – CV 100

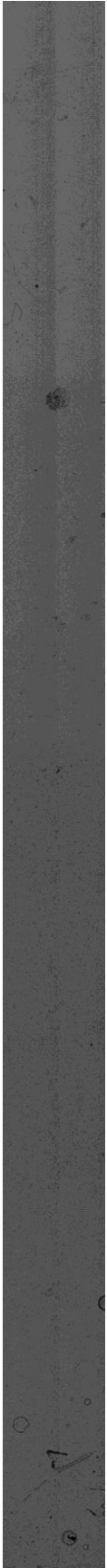
zar\_n2 – CV 200

zar\_n3 – ET 150

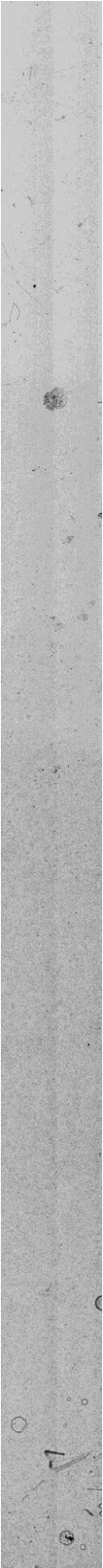
zar\_n4 – ET 300

Original images can be downloaded from:

<http://hroch.ujf.cas.cz/~ambrozova/emulze/>



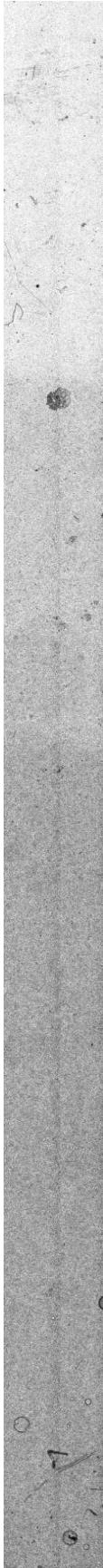
zar\_n1



zar\_n2



zar\_n3



zar\_n4