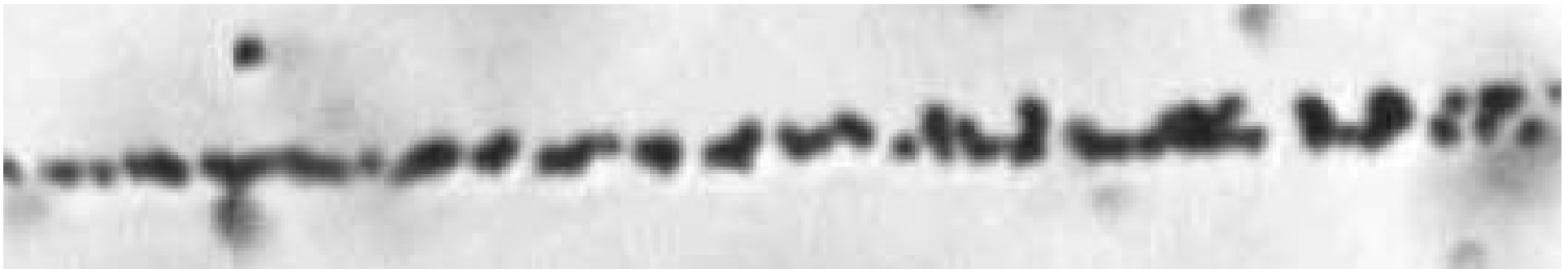
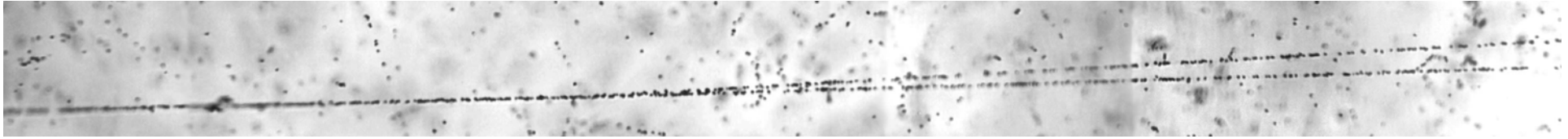


## *Relativistic ${}^7\text{Be}$ fragmentation: 2+2*



The  ${}^7\text{Be}^* \rightarrow \alpha^3\text{He}$  decay is occurred in 22 “white stars” with 2+2 topology. In the latter, 5 “white” stars are identified as the  ${}^7\text{Be}^* \rightarrow (n) {}^3\text{He}^3\text{He}$  decay. Thus, a  ${}^3\text{He}$  clustering is clearly demonstrated in dissociation of the  ${}^7\text{Be}$  nucleus.